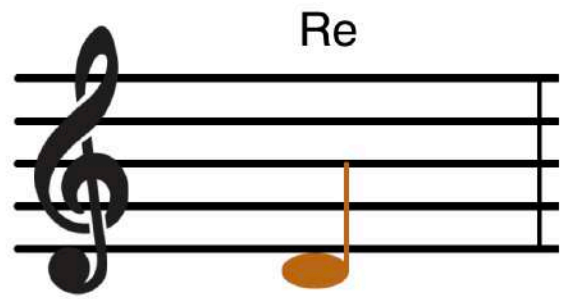
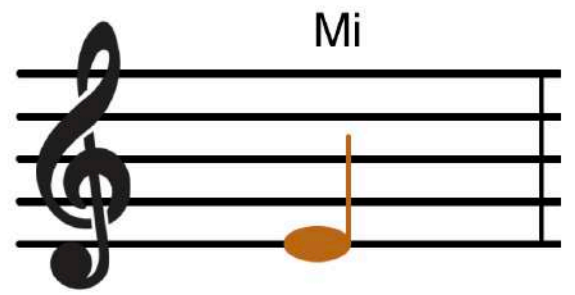
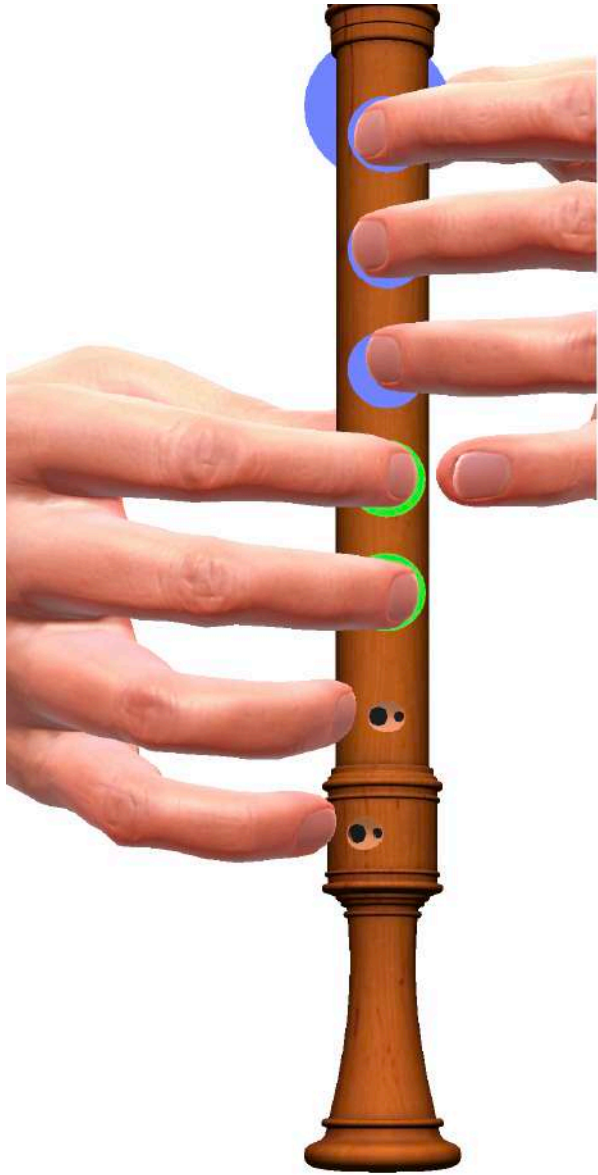
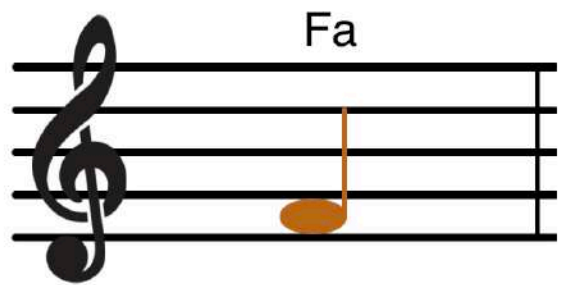
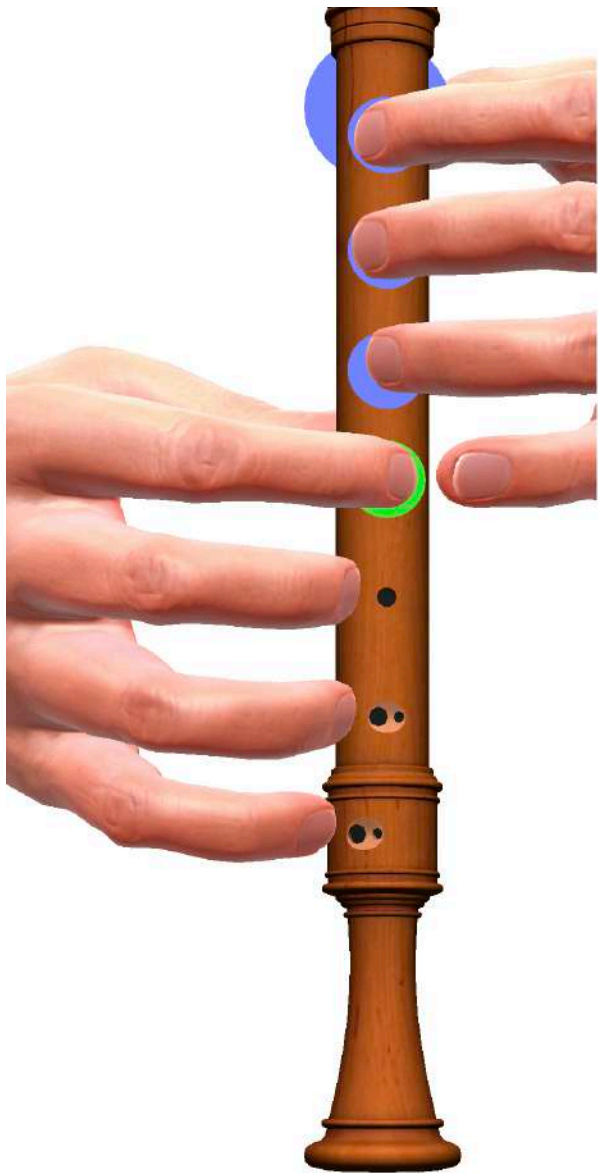


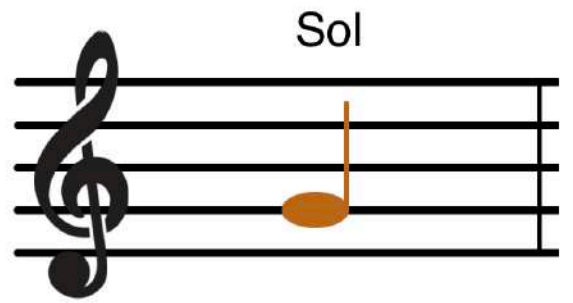
Do Grave

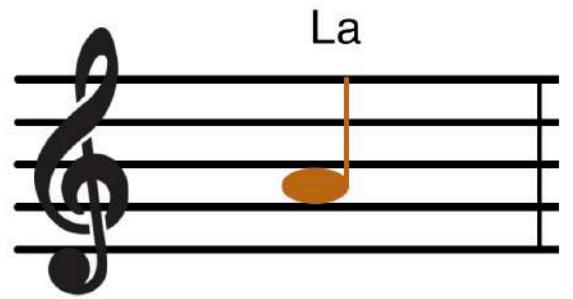
A musical staff with a treble clef. A single note is written on the staff, positioned between the second and third lines. The note is a half note with a brown stem and a brown oval head.

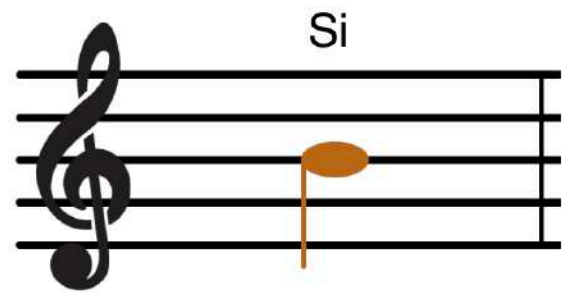








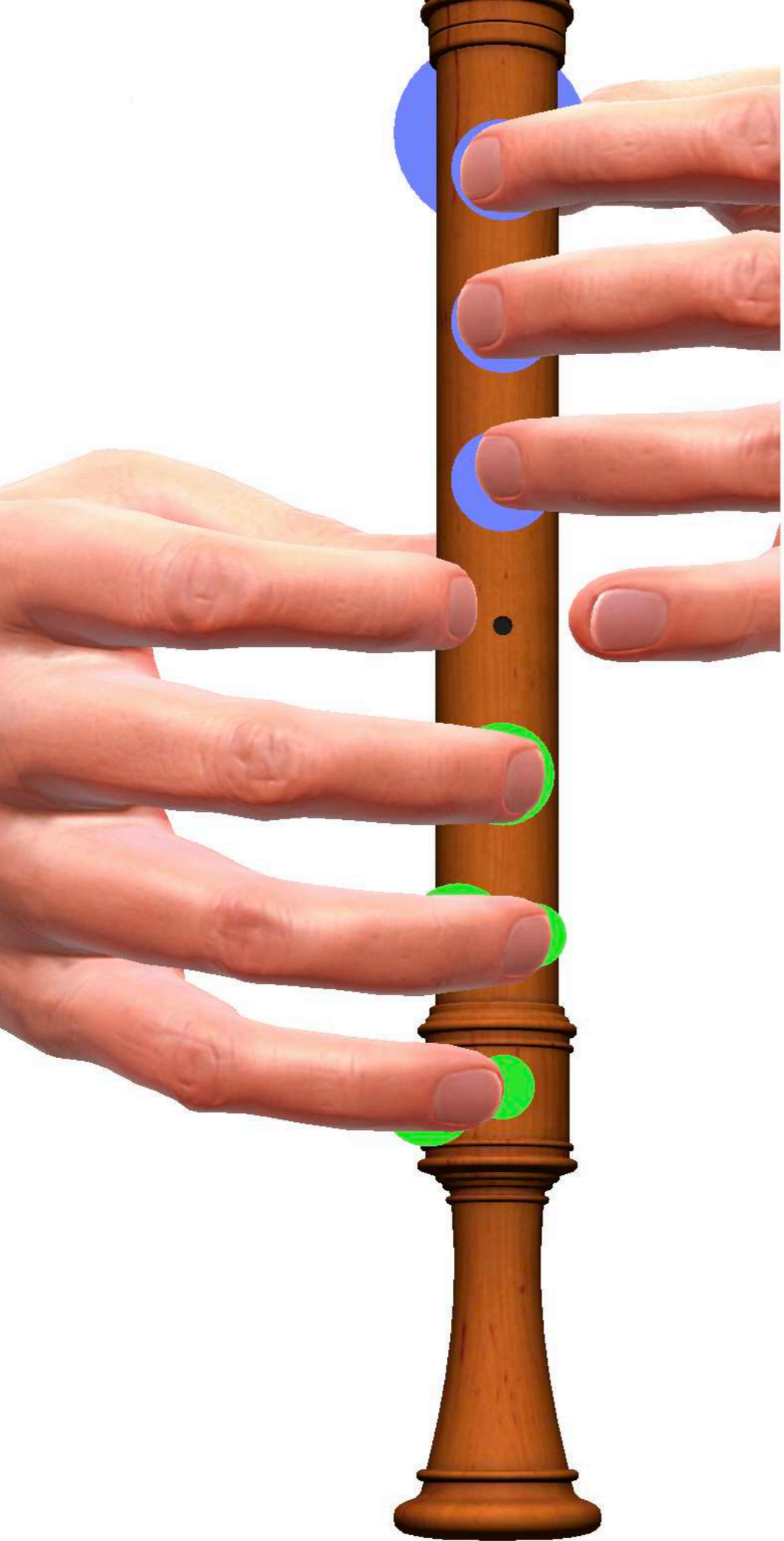








**NOTAS
ALTERADAS EN
LA FLAUTA**



ina

Fa Sostenido

A musical staff with a treble clef. The staff has five lines. A sharp sign (#) is placed on the second line from the bottom. A quarter note is placed on the second line from the bottom, with a vertical stem extending upwards. The note and sharp sign are colored in a light brown or tan color. The staff is otherwise empty.

