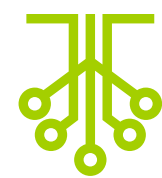




# Robòtica

Aplicada amb Intel·ligència Artificial



Andrés Tendero Vegas  
([a.tenderovegas@edu.gva.es](mailto:a.tenderovegas@edu.gva.es))

# Temes a tractar

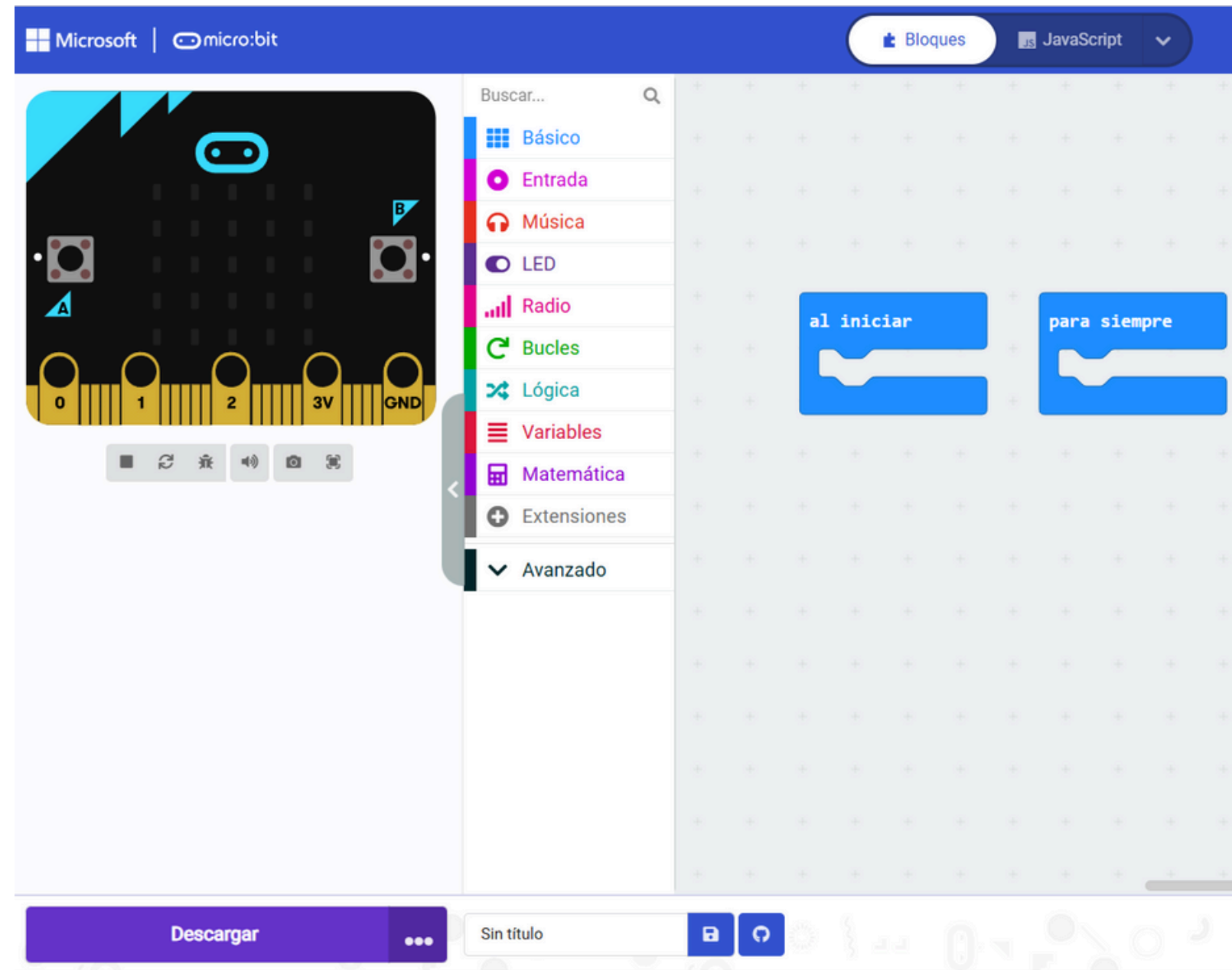
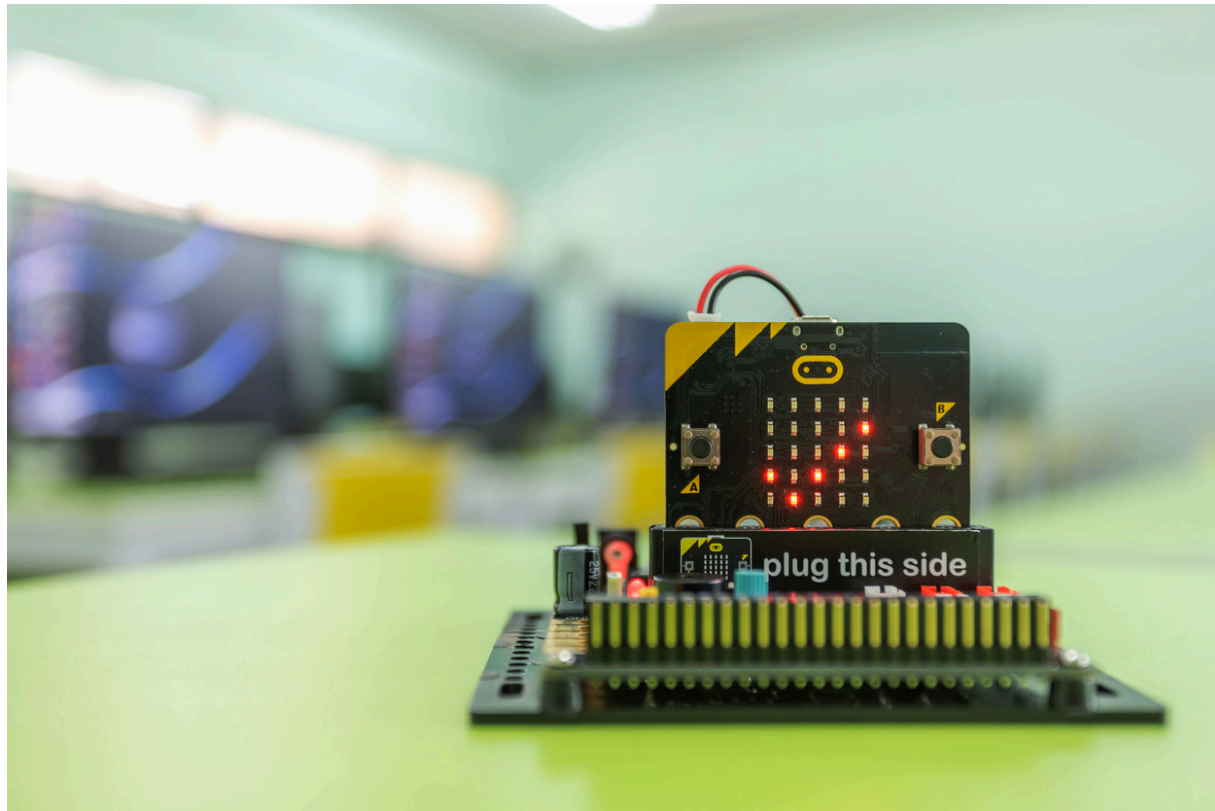
- Micro:Bit

- Cute:bot

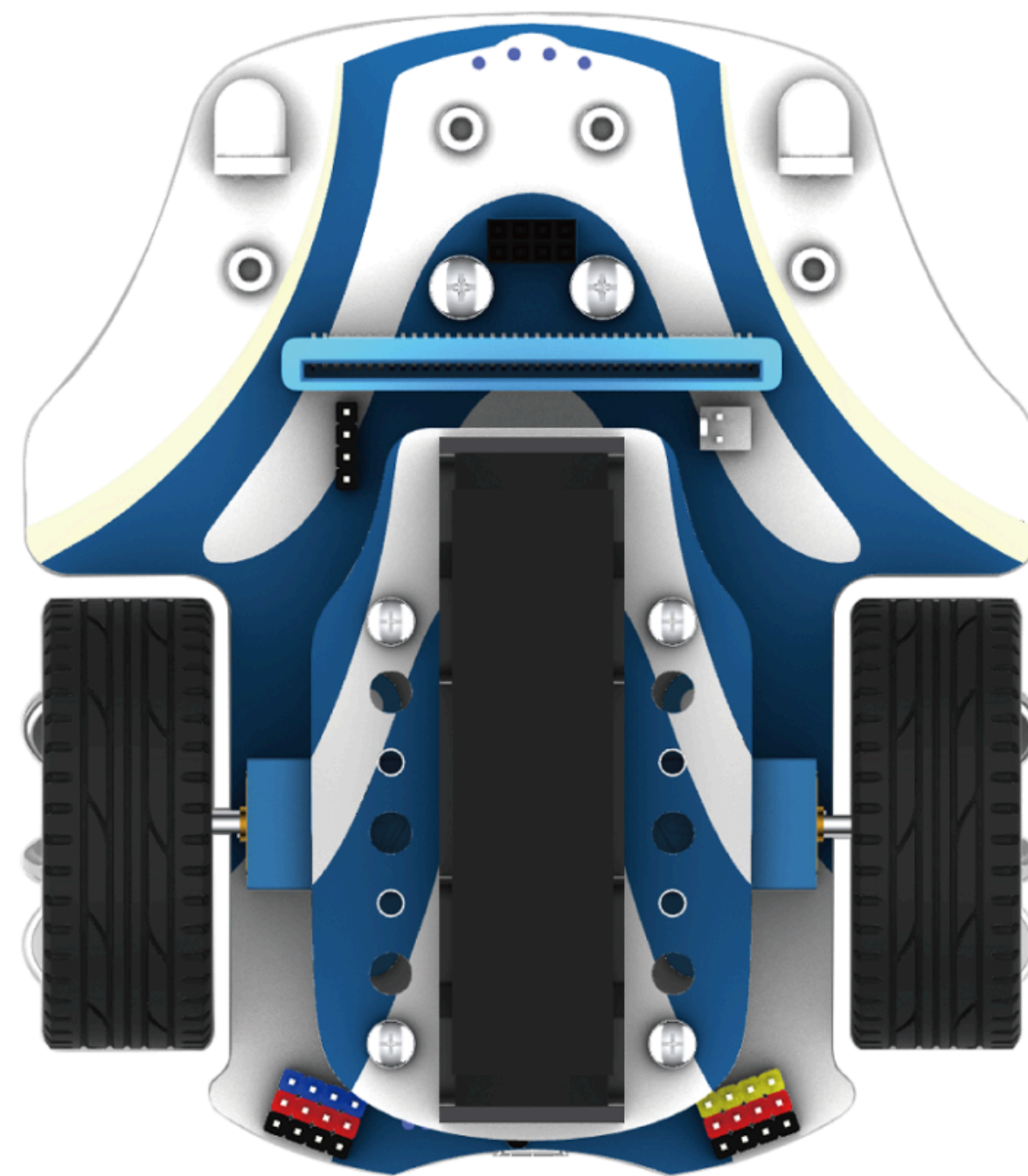
- AI:Lens

- Exemples pràctics

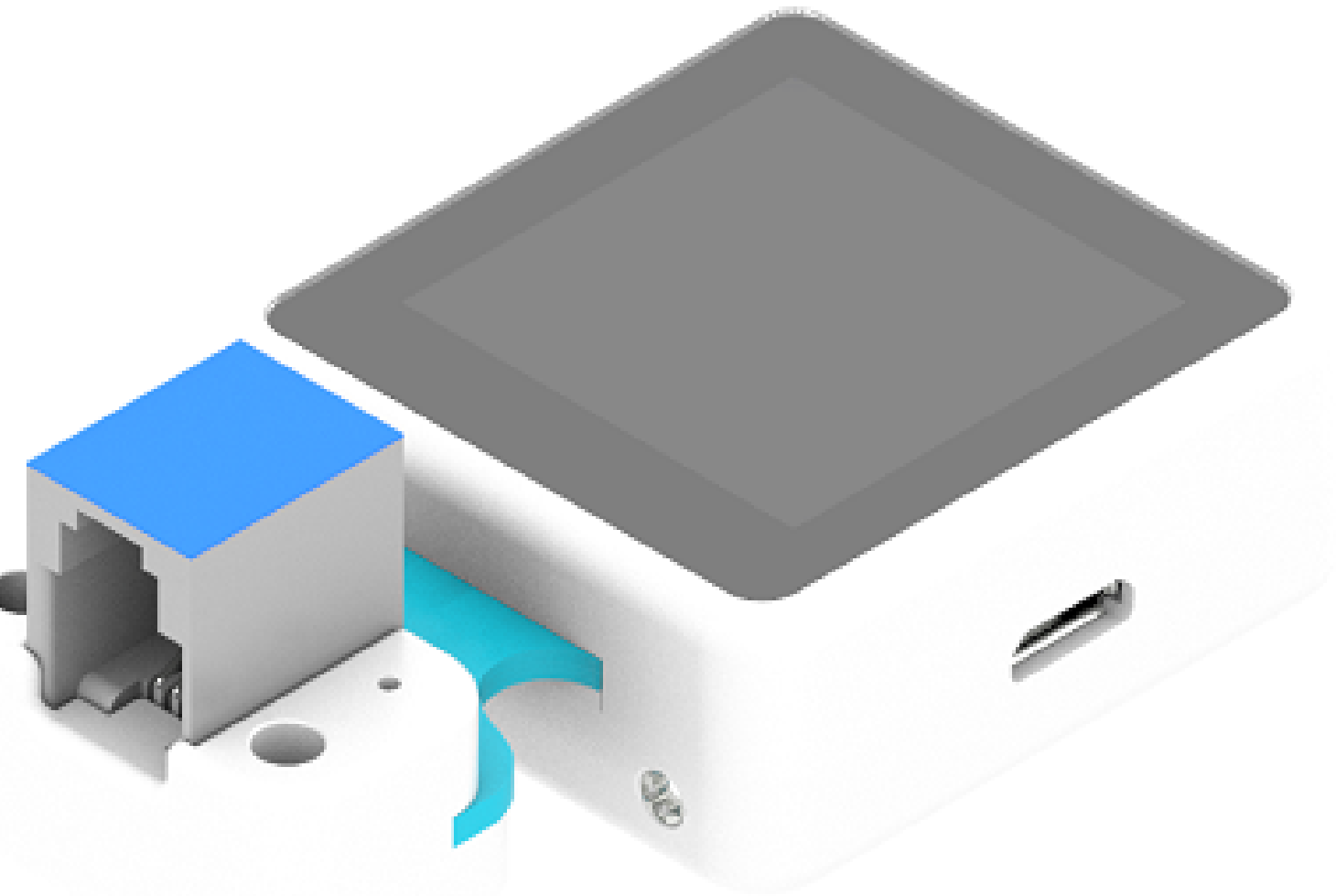
# Micro:bit



# Cute:bot



# AI:Lens



Card identification



Line-tracking



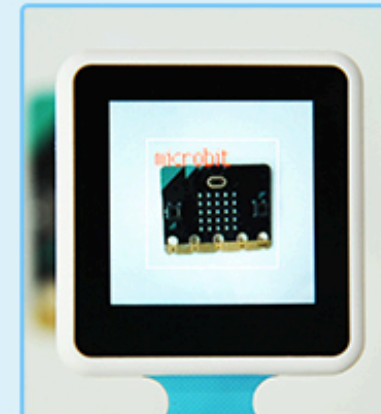
Ball tracking



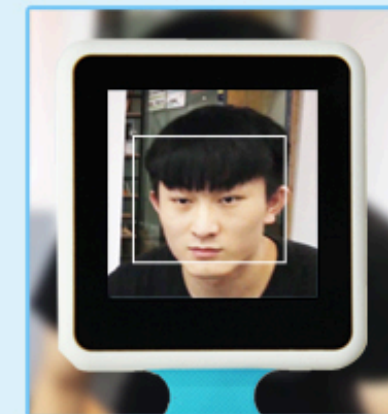
Color identification



One-button to acquire



Face tracking



# Exemples

## Identificació de colors



al presionar el botón

set LED headlights all RGB lights color to 

pausa (ms)

Get one image from AI-Lens

si Image contains color card(s):  entonces

set LED headlights all RGB lights color to 

si no, si Image contains color card(s):  entonces

set LED headlights all RGB lights color to 

si no, si Image contains color card(s):  entonces

set LED headlights all RGB lights color to 

al iniciar

Initialize AI-Lens

Switch function as



# Exemples

## Cotxe autònom



al iniciar

Initialize AI-Lens

Switch function as Card recognition ▾

pausa (ms) 5000 ▾

set left wheel speed 35 %, right wheel speed 35 %

para siempre

Get one image from AI-Lens

si Image contains traffic card(s): Stop ▾ entonces

set left wheel speed 0 , right wheel speed 0 cm/s ▾

si no, si Image contains traffic card(s): Back ▾ entonces

set car turn left at place ▾ for angle 180

set left wheel speed 20 %, right wheel speed 20 %

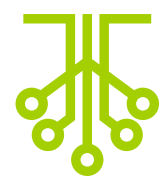
si no, si Image contains traffic card(s): Forward ▾ entonces

set left wheel speed 20 %, right wheel speed 20 %





# Gràcies



Andrés Tendero Vegas