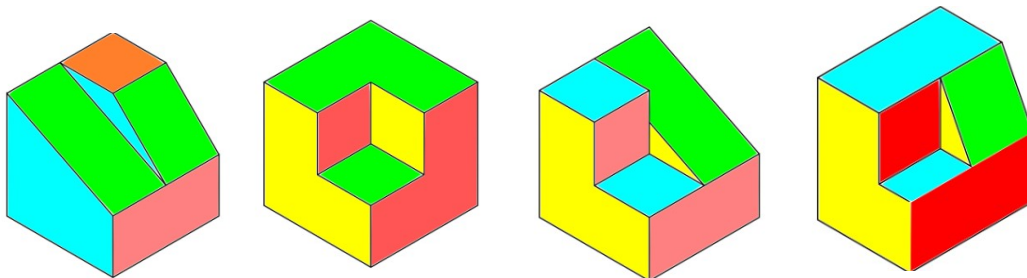
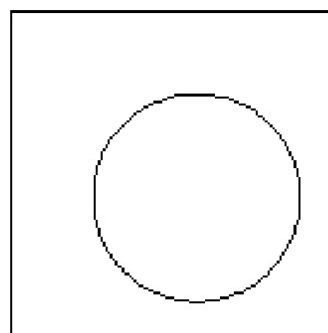
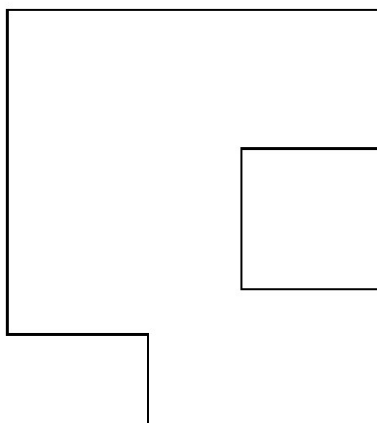


EXERCISES 1st OF ESO

- 1 Draw the plan of a workshop. Do not forget to include the elements you studied and label them.
- 2 Write a text describing the location of each workshop element that you drew before.
- 3 Write 10 rules you must follow in the workshop using obligation or suggestion verbs.
- 4 When the class is over, we must clean and tidy up in the workshop. Write sentences to describe the process.
- 5 Draw 2 signs of each kind and label them: first aid and emergency, prohibition, danger, and mandatory.
- 6 Describe the features of the four types of signals.
- 7 Describe the whole process of the annual evacuation simulation.
- 8 Draw 20 tools of the workshop and label them.
- 9 Describe the risks when using five of the tools you draw before.
- 10 What is Technology? Explain the steps of the technological process.
- 11 Match each technological step with the steps you follow with the project about a house for birds.
- 12 Draw the 3 main views of the following figures:



- 13 Put the real dimensions to the views you draw before, using the rules you studied.
- 14 Copy these figures and indicate the dimensions:



15 Classify each word from the rows in the proper column.

- Iron, threaded rod, bird cage.
- Silk, handkerchief, fabric
- Clay, brick, wall.
- Door, tree trunk, wood
- Petrol, tyre, rubber

Raw material	Processed material	Technological object
--------------	--------------------	----------------------

16. Find out the properties and applications of the following woods: Mahogany, Poplar, Fir.

17. Copy the table and fill in it with the words from the list: column, slab, foundations, pillar, joist, beam.

Definition	Name
The structures below the surface of the ground that support a building	
The baseplate where the solid wall elements are positioned	
A long, thick piece of wood, metal, or concrete, especially used to support weight in a building or other structure.	
A long, thick piece of wood, metal, or concrete, used in buildings to support a floor or ceiling. They are small beams.	
A strong column made of stone, metal, or wood that supports part of a building	
A tall, circular and vertical stone post, used as a support for a roof	

18. Draw the stresses you studied and label them. Identify the main stress that the following objects suffer: a beam in a bridge, a pillar in a house, the cord that holds a lamp, a drill bit, the graphite core of a pencil.

19. Find on the Internet information about the three tallest skyscrapers in the world. Answer the following questions: Where are they located? How many floors do they have? When were they built? Who was the architect? Do you like them? Stick a picture of them.