



2 Grado Medio Estética y Belleza
IES Las Fuentes (Villena)
C/Bulevar Ambrosio Cotes, 18



English Project

MARIAM Y LORENA

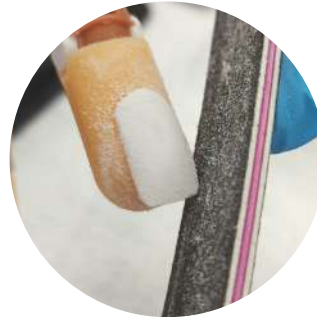
Artificial Nail Techniques

Gel Nail Protocol with Tip and Mold

Tip



1. In first, the tips are cut, with the short tips



2. File the tip on the sides and polish the nail plate, until it is porous



3. The plastic tip is glued to the nail, using the special nail glue

4. It is cut to the desired size, and the nail is filed and polished well, until it becomes porous again



5. Now, we proceed to apply the "Gel Cover Pink" a layer covering the entire nail evenly

6. To seal this layer, we dry it 1 min in LED lamp



Business and Entrepreneurship

The idea of our business



As a beauty company, we decided to name it Meraki, a word that we thought has a meaning, very much in line with what we are doing. Meraki is a word that comes from Greek, it is an adjective that is used to describe something in which a lot of effort, creativity or love is put, leaving a piece of you always in the result. With our slogan we want to encourage all those customers who do not dare to go beyond their comfort zone, to try new things, since one more touch-up does not hurt!

The logo is composed of a fan of peacock feathers and the name of the company, we decided to create our logo by taking the feathers of this bird since it is one of the most beautiful animals of the fauna that exists today on our planet. , and it seemed like a good idea to use it for this beauty company design.

As we want our company to float, we chose these feathers, because they are related to good luck and positive chi, as well as having a strong power to turn over all kinds of harmful energy and bad luck. The range of colors that our logo is composed of is neither more nor less than the natural colors of the bird, mostly green and some brown combinations, in turn, green, transmits serenity, calm and peace.

Regarding our idea to bring it to the market, it is a great innovation for the world of makeup, it is a product with which we give the opportunity to all people, whether they are skilled or not in the arts, the possibility of creating really fabulous makeup. We are talking about the son of the classic makeup airbrush, the new "**Peacock Overbrush**", an air gun with an ecological paint reservoir and a touch screen built into the top of the device, allowing us to scan the client's face and on the screen modify and design the combination of colors, or designs that we want to stamp on his face, and then the airbrush expels the compressed air mixed with the paint, reflecting everything that we have designed on the screen.

"**Peacock Overbrush** ", covers the need to satisfy the needs and dreams of our clients, being able to create everything that comes to mind, since the only thing it cannot do is add additional accessories to makeup such as pearls or false eyelashes, which That would be done at the end of the process, but don't let that stop consumers as "**Peacock Overbrush**" does all the hard work, putting complicated and precise lines on the face.

"**Peacock Overbrush**" stands out in the market as it is an innovative product that has never been seen before, launching the aesthetic and beauty sector to stardom. It stands out among the classic makeup airbrushes for its touch tablet with high precision scanner, allowing us to make professional makeup combinations.

The promoters of the Meraki company, we would be Mariam Garcia Perez the creator of Meraki and her right hand Lorena López Payá.

File



MANICURE TECHNIQUE

Personal Information

Name: _____ Sex: _____ Age: _____
 Population: _____ Telephone: _____
 Date: _____

State

Skin Changes

Calluses Dyshidrosis Eczema Hyperhidrosis Lichen planus
 Psoriasis Senile melanosis Palmar keratosis Warts Vitiligo
 Chilblains Rheumatoid arthritis Osteoarthritis

Nail Alteration

Koilonychia Onychoschicia
 Leukonychia Stepfathers
 Melanonychia Paronychia
 Nigrionichia Psoriasis
 Onychophagia Yellow nails
 Onycholysis Beau's groove
 Onychomadesis Trachioniquia
 Onychomycosis

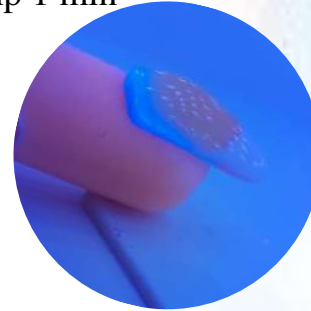


7. Dry in LED lamp 1 min

8. In this step, a layer of "Gel Cover Clear" is applied to provide extra protection and greater shine, also making the apex of the nail.



9. Dry in LED lamp 1 min



10. Finally it is given a layer with the semi-permanent diamond enamel It dries in the lamp, and the glue layer is removed with the Cleaner impregnated in a cellulose wipe



UPSHOT!!



PERFUMERY AND NATURAL COSMETIC

An essential oil or ethereal oil refers to secondary lipophilic metabolites of plants and highly volatile that reach a molecular weight below 300 units and that can be physically separated from other plant components or membranous tissues.

CHAMOMILE

Chamaemelum nobile commonly known as chamomile or common or Roman chamomile is a perennial herb of the Asteraceae family, native to Europe found in dry fields and around gardens and cultivated land in Europe, North America and South America.

Properties

- Reduces stress and anxiety.
- Prevents heart problems.
- Relieves menstrual discomfort.
- Improves the digestive system.
- Strengthens the immune system.
- Regulates the level of glycemia in the blood.
- It is a wonder for the skin.

How to use it

For infusion, the most popular application of chamomile, take a standard cup of infusion of the flowers as a mild digestive and for insomnia. ...

As a cream, ointment, or lotion, chamomile is used to relieve discomfort when applied to insect bites, wounds, or eczema

Use precaution

Its consumption could cause allergic reactions or the appearance of skin eruptions when it comes into contact with the skin. Likewise, the habitual consumption of chamomile is not advisable in people suffering from pollen allergies, allergic rhinitis or sensitivity to plants such as ragweed or chrysanthemums.

cosmetic use

Chamomile in creams and lotions fights acne, inflammations and irritations, prevents the spread of acne, while in ointments it is ideal for the treatment of burns and stings, relieving and absorbing edema.

Activities in Aesthetic Cabin

Customer Support



M: Good morning, welcome to Meraki, our star beauty center. How can I help you?

L: Good morning, I would like to get a special manicure for Christmas

M: Of course! What technique do you want?

L: I would like them to be acrylic

M: Okay... do you want us to put the appointment already?

L: Yes!

M: Well, what day could come?

L: December 22

M: At what time could I come?

L: In the afternoons, I have class in the morning.

M: I have a free space at 4 in the afternoon, is it good for you?

L: perfect

M: Okay, tell me your name, please

L: Lorena López Payá

M: What is your phone number?

L: 666-53-35-53

M: Okey, you're already targeted, for Wednesday, December 22 at 4.

L: When would it cost more or less?

M: Depending on what you want to do, but between 25-30 euros.

L: I would like a design in white, with two marble effect nails, of a medium size.

M: Okey, well... the price would be about 27 euros, the basic price is 25, plus 1 for each different nail.

L: Perfect.

M: one more thing, we have as a rule, ask for a deposit, just in case the appointment is canceled, in this case, the deposit would be 10 euros.

L: okey.

M: Well, it would be. We will send you a WhatsApp to remind you of the appointment.

L: Okey, see you.

M: Goodbye

Transparent lipstick



Have a
MAGIC DAY

MINT

Mentha is a genus of perennial herbaceous plants, belonging to the Lamiaceae family. It is estimated that it has 13 to 18 species, although the difference between them is still uncertain. Hybridization between some species occurs naturally, in addition to the existence of numerous cultivars.

Properties

Peppermint has anti-inflammatory, expectorant, antiseptic, analgesic, antibacterial or antitussive properties, among others, as the list is much more extensive. In addition, it is composed mainly of water, fiber, minerals such as calcium, potassium, copper or magnesium; and vitamins A, B, C and D.

Forms of application

Peppermint can be used internally in infusion, essential oil (it must have a label that explicitly indicates that it is suitable for internal use) and in tincture. For external uses of mint we can use it in baths, steams, essential oil, poultices, etc.

Precautions for use

Kidney Disorders: Spearmint tea may cause kidney damage. Large amounts of spearmint seem to have greater effects. In theory, using large amounts of spearmint tea could make kidney disorders worse. **Liver disease:** Spearmint tea may cause liver damage.

Cosmetic uses

The applications of Mint in cosmetics are very varied: they range from lotions and creams to activate circulation, to cosmetics for skin and hair with a purifying and antiseptic effect. Mint protects the skin from oxidative damage and prevents premature skin aging. Prevents oxidation of the skin.



In cosmetic formulas, the letters CI accompanied by numbers refer to the colorants, depending on which number they are. CI 45410, also known as Phloxin B or R&D red 27, is a powder that is colorless in the absence of water, but when it comes into contact with another substance reacts with its pH (with the saliva of the lips, the humidity of the air , ...) and its molecular structure is modified becoming a fluorescent pink ingredient. The same happens if it comes into contact with proteins (saliva, sweat, skin, ...)

PERFUMERY AND NATURAL COSMETIC

Lemon

Small evergreen fruit tree. Its fruit is lemon or citron, an edible fruit with an acid taste and extremely fragrant that is used mainly in food.

Properties

- Rich in vitamins and minerals.
- It favors digestion.
- Food rich in antioxidants.
- Helps prevent anemia.
- Protects the liver.
- Lower cholesterol
- Metabolize fat faste

Forms of application

Lemon as an all-purpose cleaner. Kitchen table sanitizer. Natural deodorant. Bleach. Nail strengthener. Reduces facial blemishes. Remedy for digestion. Repellent.

Cosmetic uses

- Clarifying moisturizer.
- Soften elbows and knees. .
- Fight acne.
- It acts as a deodorant. .
- Whiten teeth. ...
- Take care of the lips. ...
- Rinse the hair. ...
- Strengthens nails.

Precautions for use

Don't drink lemon water every day:

- If you have anemia or lack of any mineral such as calcium.
- If you suffer from gastritis or frequent heartburn.
- If you suffer from tooth sensitivity, enamel damage or weak teeth.
- If you have sores or wounds on your mouth or tongue.
- If you have stomach ulcers.

Thus, when R&D red 27 comes into contact with a substance with a pH between 3.4 and 5, it transforms into R&D red 28, a substance that is no longer transparent but fluorescent pink.

That is why Kailijumei lipsticks are transparent on the stick but color the lips. In the stick, the pigment is colorless and when you touch the lips (or even when you stain a surface, a paper, ...) it changes color.

The R&D red 28, as I said, is fluorescent pink: that's why it always goes at the end of the INCI for cosmetics. The ingredients at the end of the list are those with the least amount. Because if we were to abuse and include it in a lot of quantity, the color of the final product would be too striking on the lips (as if we had painted them with a "phosphorite" pink marker).

towards a more reddish tone (this is not present in the Kailijumei, but to complete the data).

Phloxin is used in cosmetics for this sympathetic property. It is also used as a food coloring, in medicine capsules and, above all, in laboratories, to stain tissue samples and facilitate their analysis.



Kailijumei lipstick



The success of the transparent lipsticks Kailijumei was due to the fact that it coincided in time with the fever for Beauty and the Beast. The transparent lipstick with the flower inside is reminiscent of the rose in the glass urn.

The "magical" effect of color change was due to the temperature or pH of the user's lip. Thus, in each one the color is unique, personalized.

The list of ingredients :

Ethylexyl Palmitate, Polyisobutene, Diisostearyl Malate, Isostearic Acid, Dibutyl Lauroyl Glutamide, Dibutyl Hexylhexanoyl Glutamide, Olea Europaea Fruit Oil, Vitis Vinifera Seed Oil, Simmondsia Chinensis Seed Oil, Tocopherol, Methylparaben, Lavandula Angustifolia Oil, Gold, CI 45410

The formula starts with a series of ingredients of synthetic origin. All of them are transparent, not the vegetable oils used from olive, grape and jojoba. Therefore, the same thing that happened with the EOS Crystal, namely the minimum proportion in which they will be present and how refined they will be so as not to give color to the final product. Parabens, lavender essential oil to hide as much as possible the smell of synthetic compounds, which many comments on the web call "plasticorro" and, after a little gold to add "magic", comes the "truly magical" element. : the CI 45410.



GERANIUM

THE GENUS GERANIUM, COMMONLY CALLED GERANIUM, GROUPS 422 SPECIES OF ANNUAL, BIENNIAL AND PERENNIAL PLANTS FREQUENTLY USED IN GARDENING FOR THEIR ATTRACTIVE FLOWERS AND CHARACTERISTIC AROMA.

Properties

It has antimicrobial properties so it is effective against acne. It is decongestant and softening. For this reason it is used on skin burned by the sun or that suffer irritations or burns of all kinds. It is a powerful remedy against stretch marks and eczema.

Forms of application

Being a powerful healing agent, it is used to heal wounds, hemorrhoids, etc. With its oil massages are given to relieve muscle aches and circulatory problems. Combat fluid retention thanks to massages on the legs and ankles with geranium essence

Cosmetic uses

Geranium essential oil offers multiple health benefits -mainly that of our body and our skin- that can be attributed to its excellent properties as a cleanser, astringent, tonic, and for the prevention and treatment of wrinkles.

INCIENSE

Incense (from the Latin incensum, participle of incendere, "to ignite") is a preparation of aromatic vegetable resins, to which essential oils of animal or vegetable origin are often added, so that when burning it gives off a fragrant smoke for religious purposes, therapeutic or aesthetic.

Properties

- Relieves anxiety and depression. Boswellia frankincense is great for relieving anxiety and depression.
- Balances the emotions.
- It attracts good luck.
- Reduces bacteria in the air.
- Stimulates cognition.
- Reduces arthritis.

Forms of application

Since time immemorial, man has had a connection with incense, either for its pleasant aesthetic smell, for its use in ceremonies and rituals, its religious use, in cleaning or healing, or as a repellent of bad energy, spirits and bad luck in a spiritual and therapeutic context.

- Relieves anxiety and depression.
- Boswellia frankincense is great for relieving anxiety and depression.
- Balances the emotions.
- It attracts good luck.
- Reduces bacteria in the air.
- Stimulates cognition.
- Reduces arthritis.

Precautions for

The incense smoke should be light and light in color. Black smoke indicates that the product is of poor quality and it is better to discontinue its use. Put the incense in a well-ventilated place. If being close to it makes you feel dizzy or breathing is difficult, turn it off and find a place where you can find fresh air

Cosmetic uses

1. Bath for stress
2. Household Cleaner
3. Remedy for indigestion
4. Natural antiseptic
5. Treatment for colds
6. Anti-inflammatory and soothing
7. Remedy for sleep
8. Cosmetic for the skin



Mechanical Hair Removal and Hair iscoloration

Warm wax is the most traditional and most used method in hair removal, as it removes hair at the root.

Its composition is based on a mixture of specific waxes, adhesives, softeners and glucose syrup.

Its low temperature is perfect for people who suffer from circulatory problems and also for skins that are sensitive to heat, others, by grasping the hair well, completely removes all the hair, whether fine or thick.

This wax can be used by wooden or metal spatula and with a wax melter or there is also the option of using it by roll-on.

The warm wax is very easy and comfortable to use, and more if it is with the roll-on, since it is applied in the area, leaving a thin strip, and then a band of cellulose is rubbed on it, and it is quickly removed to do the least possible damage.

With this wax you should be careful, as it is possible to create bruises, or take the skin in the cellulose band.

