



# Climate change

Gabriella, Sofia, Miriam, Nora

# CONTENT

An aerial photograph of a surfer in a blue wetsuit floating on a white surfboard in clear, shallow blue water. The water's surface is covered in intricate, shimmering patterns of light and shadow. Another surfboard is partially visible in the lower right.

**What is climate change.**

**What factors cause it.**

**The repercussions for the sea.**

**The repercussions for the posidonia meadows.**

**Why posidonia reduce climate change.**



# What is climate change

Climate change is the defining issue of our time and we are at a defining moment. It's refers to long-term changes in temperatures and weather patterns. These changes may be natural, but since the 19th century, human activities have been the main driver of climate change.

# What factors cause it

Deforestation which adds more CO<sub>2</sub>

Production of electricity by combustion

Use of non-renewable sources

Public and private transport powered by fossil fuels

Residential and business buildings

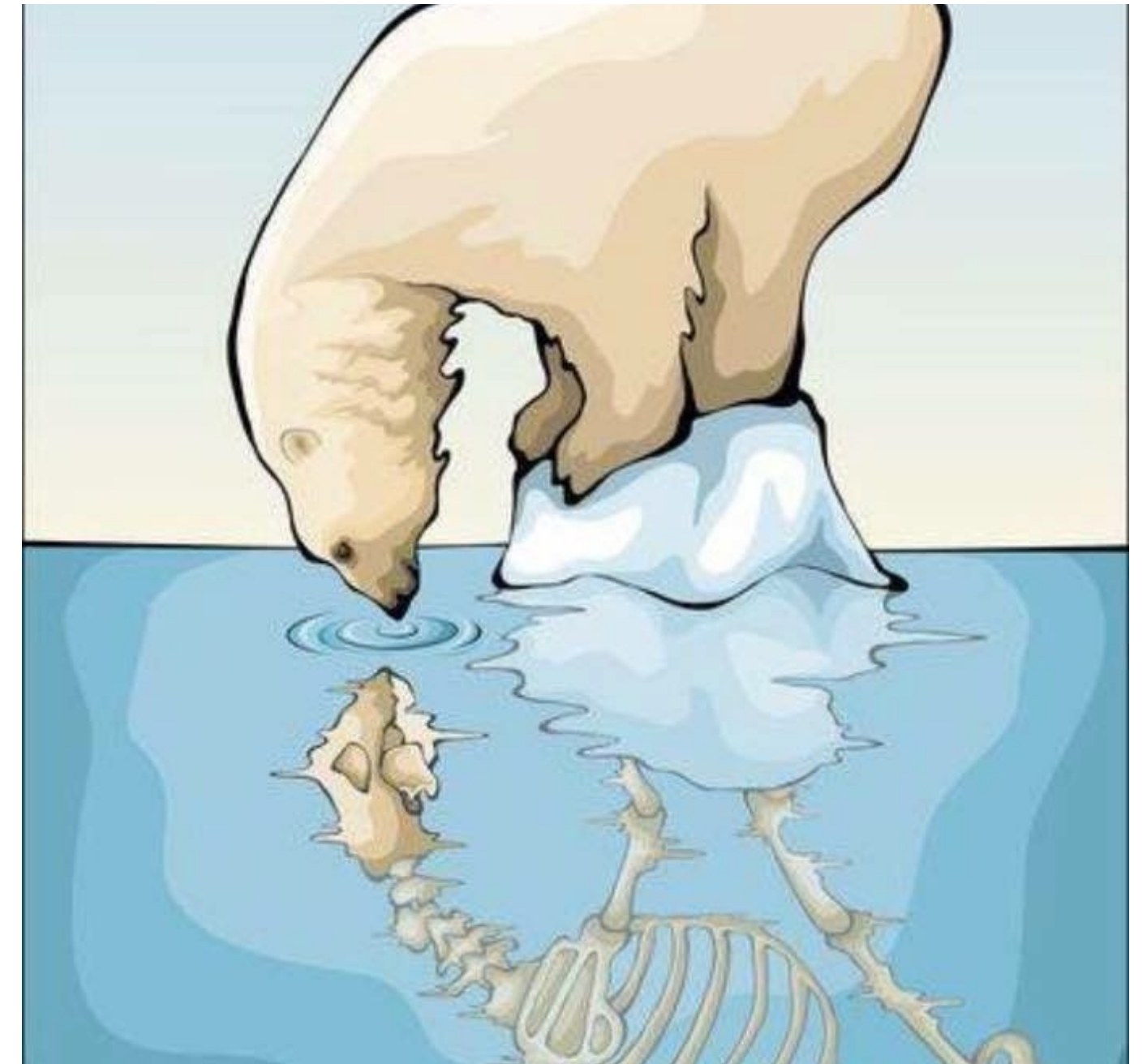
Agricultural activities

Lifestyles oriented towards excessive consumerism



# The repercussions for the sea

Climate change causes sudden increases in temperature and acidification that can lead to the loss of marine habitats and species, and changes in currents and warming of waters that are changing the distribution of fish stocks and altering the structure of ecosystems.



# Talking about posidonia

Climate change causes the disappearance of 6% of the Posidonia surface each year. This species is very sensitive to changes in the properties of the water and scientists agree that when the water temperature exceeds 28.5°C, the mortality rates of Posidonia skyrocket.



# Why posidonia reduce the climate change

Posidonia seagrass makes terrestrial forests 20 times more capable -per unit area- of capturing carbon dioxide (CO<sub>2</sub>), generating oxygen, and filtering that layer of polluting gases that causes global warming and, of course, it thus helps to combat climate change.

