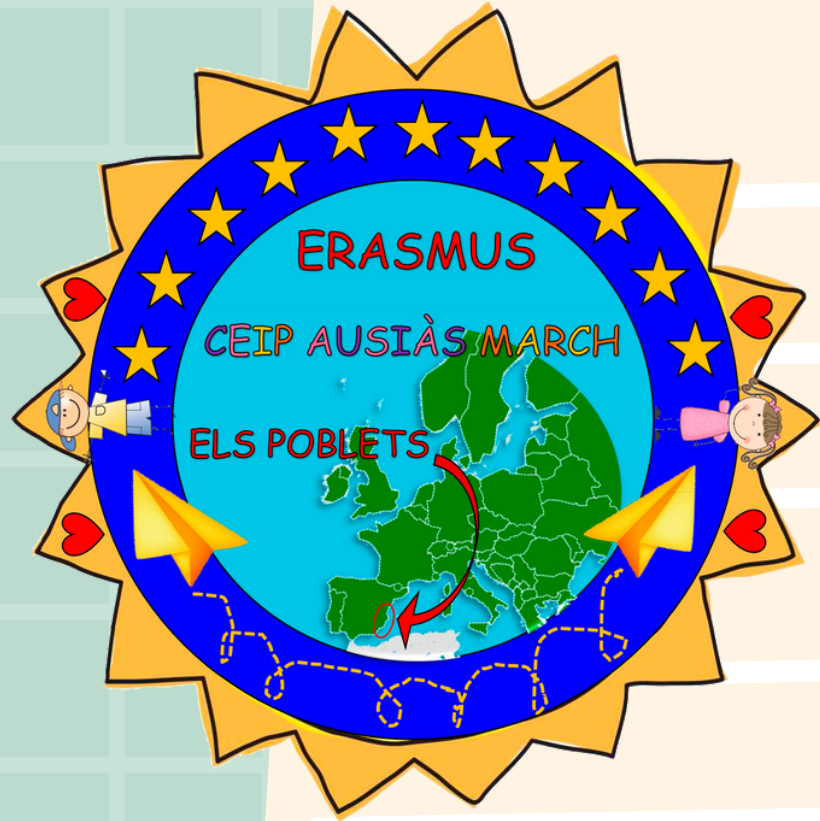


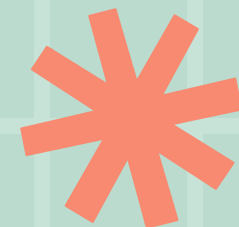


KEEP YOUR WATER CLEAN,
LIVE THE WORLD



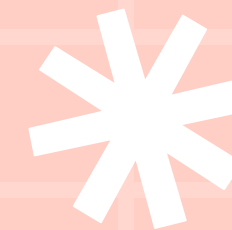
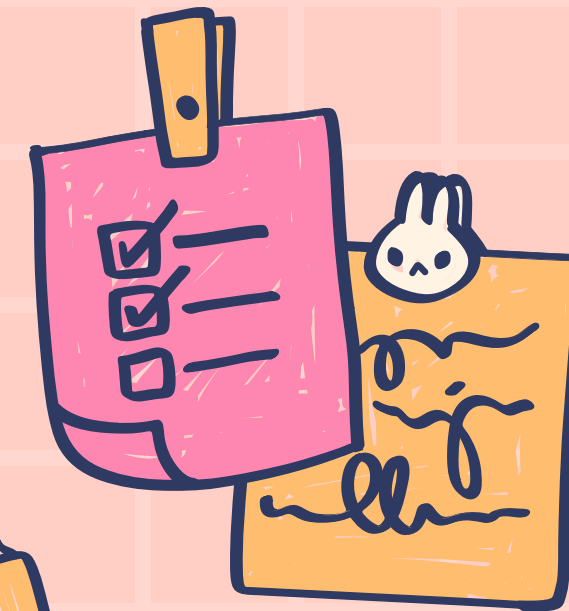
THE SPANISH EDUCATIONAL SYSTEM

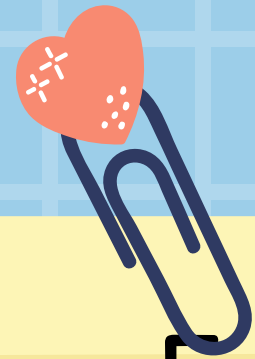
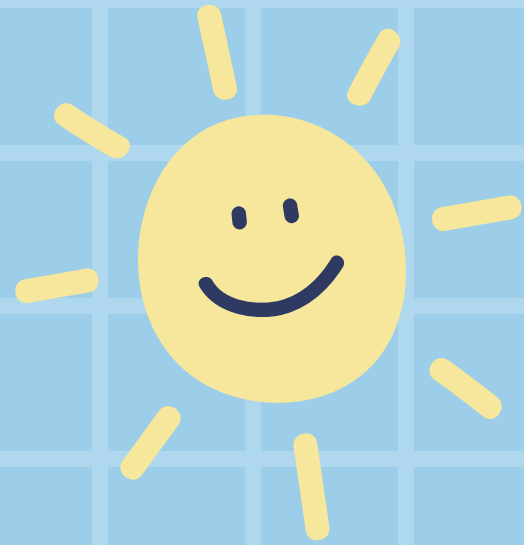
Co-funded by the
Erasmus+ Programme
of the European Union



The Spanish educational system is regulated by the Organic Law of Education (LOE) 2/2006 of May 3.

In September 2022, LOMLOE 3/2020 29th December will take effect





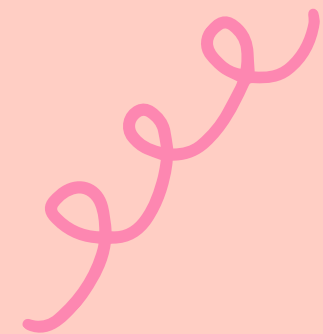
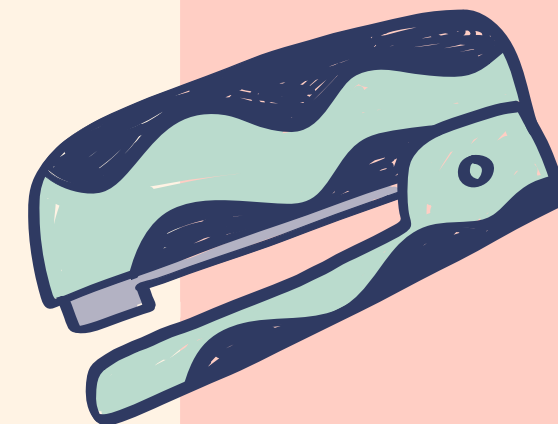
Early Childhood Education is divided into two cycles, the first cycle is from 0 to 3 years old and the second from 3 to 6 years old, totally free and voluntary.



Compulsory education

Primary: includes from 6 years to 12 years. (6 courses)

Secondary: from 12 to 16 years old. (4 courses).



DEGREE AFTER COMPULSORY SCHOOLING

Three different ways to get it with the new law LOMLOE

THE SCHOOL GRADUATE OR
COMPULSORY SECONDARY EDUCATION

offers a series of basic skills
that can be applied
to a large number of academic,
social and professional contexts.

1-Studying the 4 ESO levels

2-Studying the 4 ESO levels, with
curricular diversification programs
in 3rd and 4th levels.

3-Studying a basic professional
formative cycle

Volunteer Education

Bachiller: students with the title of the ESO or the Middle Grade.

- Sciences and Technology
- Humanities and Social Sciences
- Arts
- General

Formative Cycles. Ages between 16 and 20 years.
(exceptionally at 14-15 years)

- Basic Cycle: students without the title of the Eso
- Middle Cycle: students with the title of ESO
- Higher Cycle: students with the intermediate degree or Bachiller





UNIVERSITY

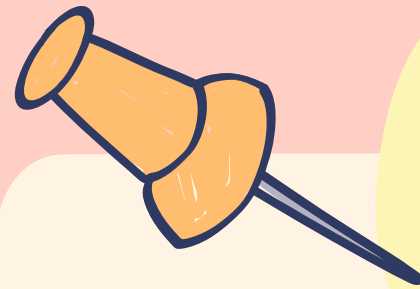
HIGH SCHOOL DIPLOMA
HIGHER DEGREE

Different degrees:

Grades: 4 years or 6 years. The first 180 credits and the second 240 credits.


Master's Degrees: between 60 and 120 credits.

All this teaching structure includes the adequacy of students with special educational needs, distance education and adults.





Language plans:



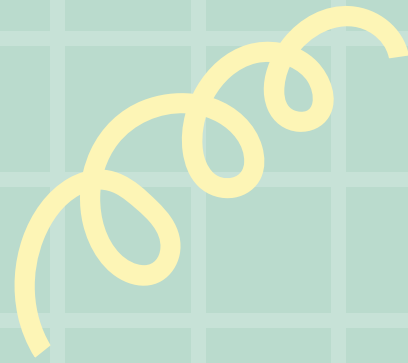
Spain is divided into 17 Autonomous Communities and each of them, according to law, adapts its linguistic plan to the co-official languages.

Our community coexists with two official languages that are: Spanish and Valencian and a third compulsory foreign language that is mainly English.

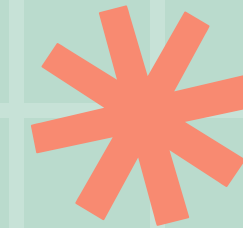


for what is the
to be best in an
point of view.
Language
for communica
words or expre
The manner o
for what is th





PRIMARY School schedule



CONTINUOUS

Students from 9 a.m. to 2 p.m.

TeacherS: 9 a.m. to 3 p.m.

A complementary afternoon from 3:00 p.m. to 5:00 p.m.

SPLIT

Students from 9 a.m. to 12 p.m. and from 15 to 17 hours.

Teachers: from 9 a.m. to 1 p.m. and from 15 to 17 hours.

MIXED

Morning and in those afternoons determined by the center according to the approved modification proposal.

Students 25 hours per week

Teachers 30 at school and 7 1/2 at home per week

Thank you

