

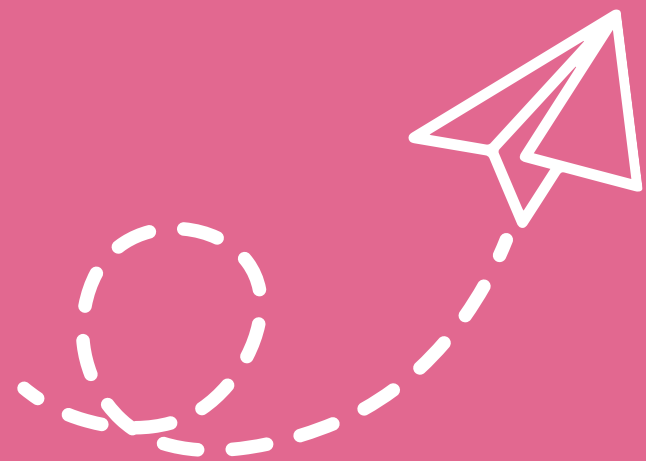
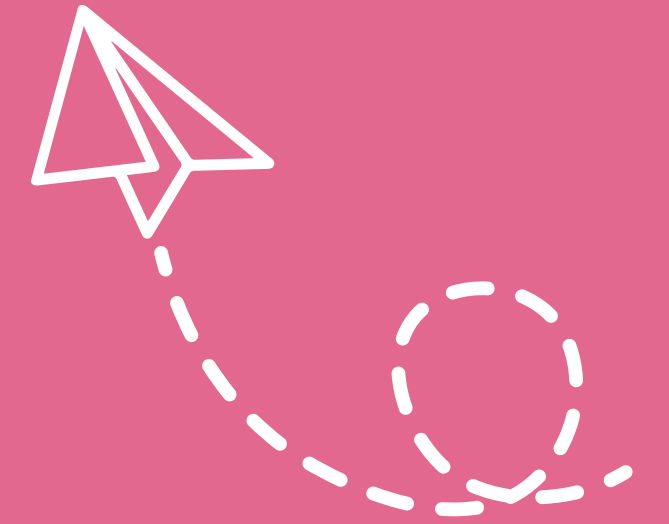
DOSES MATEMÀTIQUES

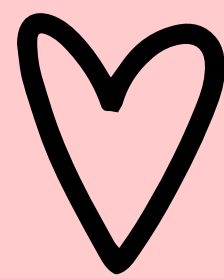




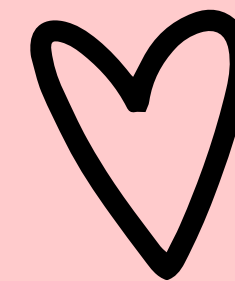
INDEX

- Mary Somerville
- Emmy Noether
- Sophie Germain





MARY SOMERVILLE



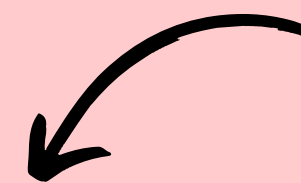
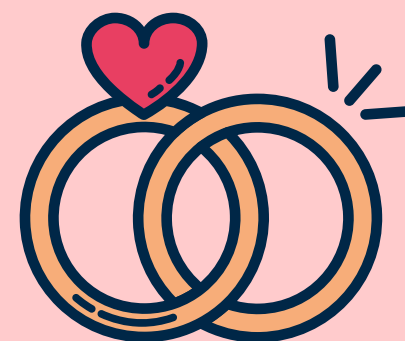
26/12/1780

28/12/1872

Escocesa

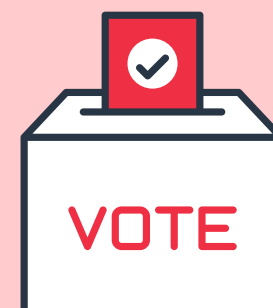


1846



William Somerville

Samuel Greig



1r:

Dret al vote de les dones



La Place



Atronomical Society



$$(x^a)^b = x^{a \cdot b}$$

♡ EMMY NOETHER ♡

$$\frac{d}{dt} \left(\sum_{\alpha} \frac{\partial \mathcal{L}}{\partial \dot{q}_{\alpha}} \xi_{\alpha} \right) = 0$$



1882/1935



1. Teorema de grups

2. Teorema de Noether

3. Teoria de mòduls

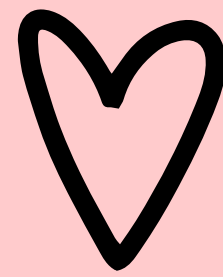


Universidad de Göttingen
1900/1915

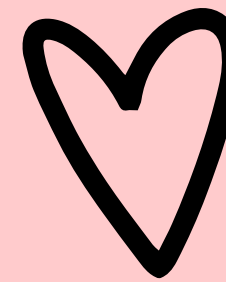


Max Noether



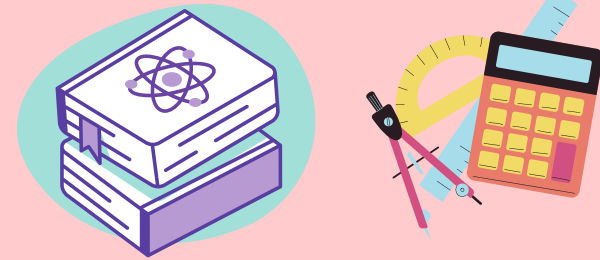


SOPHIE GERMAIN



1776/1831

1789



TEORIA DELS NOMBRES

ULTIM TEORE DE FERMAT



$$x^p + y^p = z^p$$

1804



1808

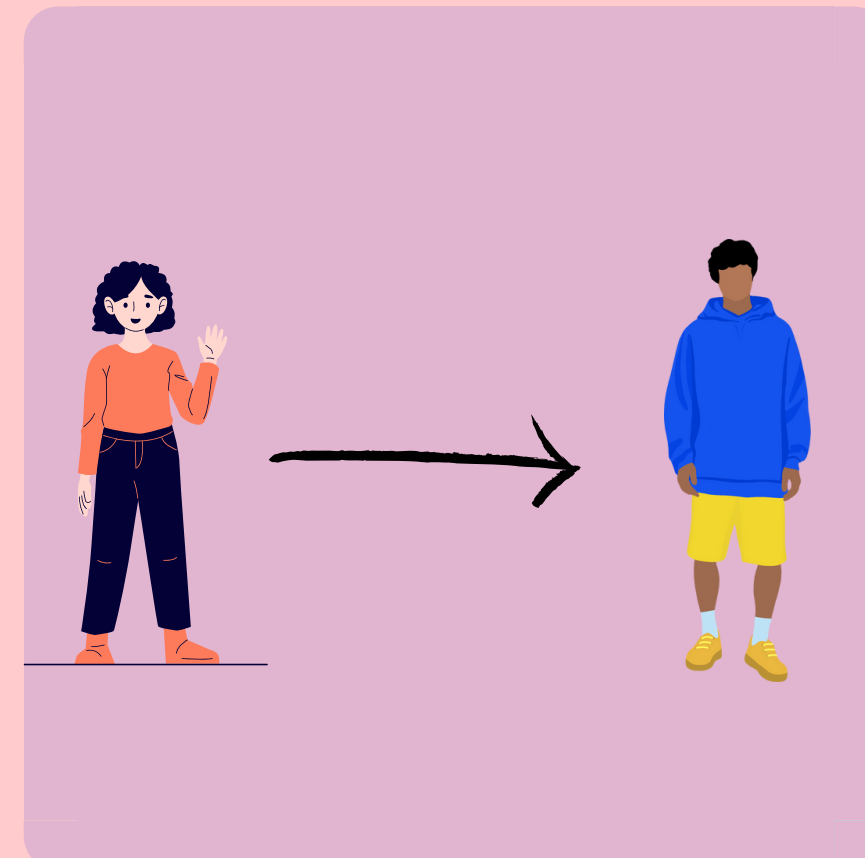


Gaus
"Sr Le
Blanc"

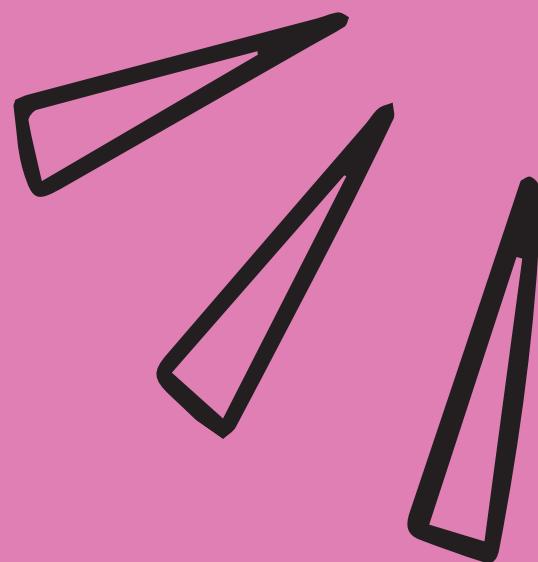
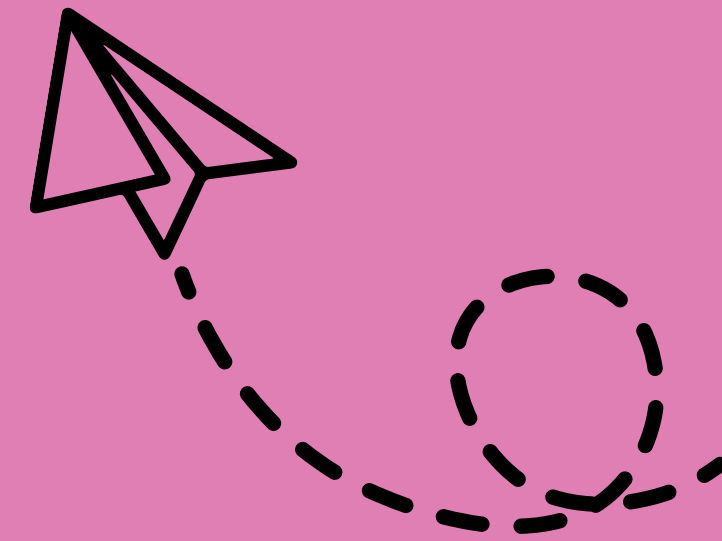
1816



1830



iGRÀCIES!



Inma Sánchez i Pau chiralt